



HARDWARE  
FOR A BETTER LIFE

ART·FOCUS·VISION

BORUI  
HARDWARE  
DOOR CONTROL

Shantou Borui Hardware Indusrty Co.,Ltd  
Wenzhou Borui Hardware Products Co.,Ltd

ISO 9001:2015 Certified



Add:  
No.9, Shengye South Road, Jinping Industrial Park, Shantou,  
Guangdong, China  
Add:  
No. 398, Fengdu 2nd Road, Luofeng North Industrial Zone,  
Wenzhou, Zhejiang, China



Tel:  
0754-88366573



Mail:  
info@borui-hardware.com



URL: [www.borui-hardware.com](http://www.borui-hardware.com)

BORUI  
HARDWARE INDUSRTY

Borui, the expert for door control hardware solutions!

**BORUI**  
HARDWARE INDUSRTY

# Hello!

**Borui Hardware**  
SHANTOU BORUI HARDWARE INDUSRTY CO.,LTD  
QUALITY LEADS THE FUTURE.





---

# Company Profile

Borui Hardware is an ISO 9001:2015 certified enterprise specialized in the technology, manufacture and marketing of hardware products for doors and windows, which are mainly produced from its factories located in Shantou and Wenzhou.

Starting in Shantou, China's main production place for architectural hardware since early 1990s, Borui are experienced and expertised in supplying and supporting the door and window industry across the world. While retaining competitive rates we never compromise the quality. A dedicated quality assurance team monitors your order activities at all procurement from materials selecting to assembly line production, from quality inspection to cargo shipment to your port.

Borui is a client-centric enterprise. We make it our business to understand and help our clients achieve their business goals. We thoroughly examine each customer's case and understand clients' specific goals and needs to provide clients reliable and efficient solutions. It's simple. we understand that - our success is up to the success of you!





# Headquarter & Production Base

## Borui Subsidiary Factory



### Wenzhou Borui Hardware Co., Ltd.

In 2013, along with its entering into the international markets, Borui Hardware established a subsidiary factory in Wenzhou, Zhejiang Province to expand its product ranges and optimize costs.

Besides BORUI branded products, we have also offered ODM & OEM services to many global brands.



## Borui Headquarters

### Shantou Borui Hardware Industry Co., Ltd.

Since 2004, Borui Hardware have been engaged in marketing and manufacturing-window & door hardware and are now one of the leading manufacturers in China.

Borui Hardware is also an engineering solutions specialist in the design of innovative hardware for windows, doors & glasses.

# History of BORUI

01

**Borui's found in 2004** as a supplier of hardware fittings like hinges,rollers etc. to the door & window industry in China.



**SET SAIL**



**2004-2008**

02

**As the business growing, Borui** expanded its product ranges and engaged in the development of new technology.



**EXPAND**



**2008-2012**

03

**We entered into international** markets in 2013 and established a subsidiary factory in Wenzhou to cover more products and optimize cost.



**VISION**



**2013-2018**

04

**The overseas revenue** increased significantly to make nearly 50% of the total that makes Borui an international player.



**GLOBALIZATION**



**2019-2022**





# ISO Certification

Borui Hardware's facilities have Quality Management Systems registered to ISO 9001:2015. The benefits for customers include continuous improvement, effective service and global support.

## Quality Objectives

Quality objectives are established by management to emphasize organizational priorities and encourage improvements to product and process performance. Some of the objectives include: customer satisfaction measures, product performance to industry standards, cost of quality goals,delivery performance...

## Quality Improvment Teams

BORUI is proud to have its own teams of highly trained quality control inspectors whose main task is to ensure the consistent quality of our products. From the design stage through prototyping, tooling and production, our QC team adheres to customers' specifications, or else to our own in-house standards.

## Continuous Improvement

BORUI Hardware's quality policy is to "satisfy the customer by always providing the best products and services, right the first time, on time, through continuous improvement". This commitment to continuous improvement is supported by management and involves employees at all levels of the organization.



# Research Development

## Quality Leads The Future

## Our in-house equipment

and facilities are set up to handle all technical and engineering drawings, which in turn allows us to asses the prototype units and perform normal testing on the the off-tool samples for customers' approval, prior to the mass production.

## This team of engineers

whose sight and mission is focused on accomplishing a progressive R&D program, is the backbone of BORUI's strength.

## Supported by a strong

team of engineers and our accumulated expertise, BORUI is equipped to address every technical aspect during the design and development stages of each new product, in accordance with the customers' specifications or per the internationally recognized standards.

# Borui Values

## Customer

We don't make sales, but customers.



## Quality

Our top priority is only quality.



## Innovation

Innovation satisfies customers best.



## World

We service the world, we care for the world.

- A culture of innovation and trusted results.
- Providing the broadest, highest quality product.



Our vision is to make better hardware for a better life of all people around the world.

Our mission is to create long term value for customers, employees, families, suppliers and communities through:

# Borui Teamworks



# CONTENT

Borui, the expert for door control hardware solutions!



## Floor Spring

Using high-grade materials and automatic professional equipments, through the advanced and strict casting process, the precision of each product is guaranteed.

–  
Page  
**01-06**



## Glass Clip

The shell is made of high-quality stainless steel, stamped and formed by automated equipment, and the surface is available in mirror light, sanded, titanium, and other customized colors.

–  
Page  
**07-12**



## Door Closer

High-quality aluminum alloy body, electrostatic painting process, customized color.

–  
Page  
**13-18**



## Bathroom Clips

Made of high-quality 304 stainless steel, copper and zinc alloy and materials can also be customized. A variety of angle options: 0 degrees, 90 degrees, 135 degrees, 180 degrees.

–  
Page  
**19-26**



## Shower room Accessories

High-quality 304 stainless steel, strict and precise casting and grinding through automated professional equipment. The surface can be mirror light or sanding.

–  
Page  
**27-34**



## Electric Smart Solutions

Create a more comfortable life for you!

–  
Page  
**35-48**



# Floor spring series

Using high-grade materials and automatic professional equipments, through the advanced and strict casting process, the precision of each product is guaranteed. Automatic negative ion adsorption anti-oxidation spraying on the surface increases the anti-rust ability of the product. The internal transmission parts are made of high-quality special steel, processed by high-precision CNC equipment, and finally heat treated to improve the overall performance.

The low temperature antifreeze hydraulic oil ensures that the closing speed will not be affected in the subzero low temperature weather.

Independent two-stage door closing speed adjustable design can meet various door closing speed needs and various specific use environments.

The unique safety valve oil circuit design can prevent the external force from causing fatal damage to the product when the door is closed.

The service life can reach more than 500,000 times.  
Suitable for glass doors and wooden doors in various public places.

Art  
**Focus**  
Vision  
quality

Borui, the expert for door control hardware solutions!

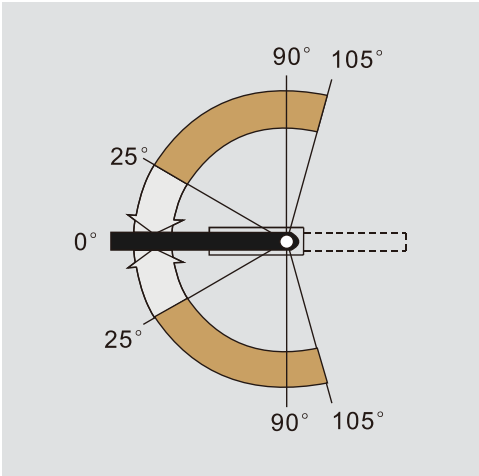


# FS-1300 Transom Door Closer

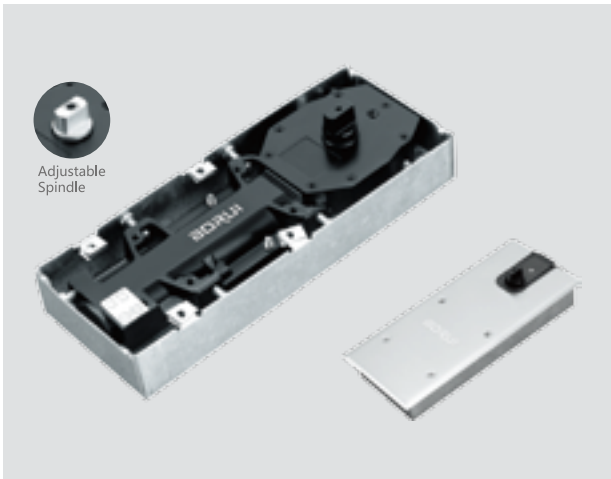


High-quality aluminum alloy body,  
electrostatic painting process,  
customized color.

Capacity:.....100kg/150kg  
Door Width:.....1150mm/1300mm  
Sutable For Frame Install:  
Maximum Closing Time:.....≥46s  
Minimum Closing Time:.....≤3s  
Max Open Degree:.....105°  
90° Angle:.....HO or NHO  
Adjustable speed:.....Closing Speed: 90°- 25° Latching Speed: 25°- 0°



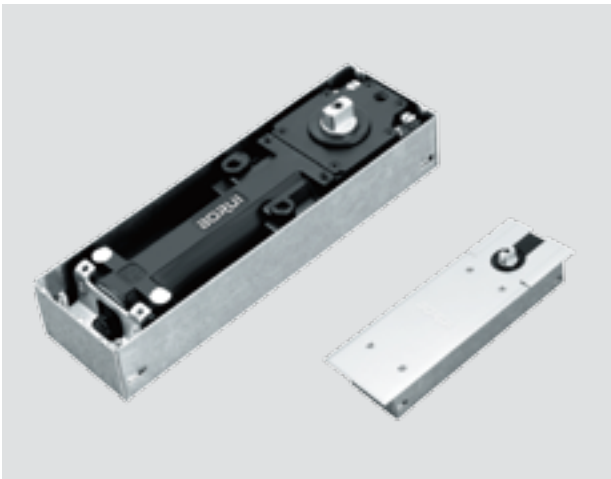
## FS-1200 Floor spring



Capacity:.....120kg  
Door Width:.....1200mm  
Sutable For Frame Install:  
Maximum Closing Time:.....≥46s  
Minimum Closing Time:.....≤3s  
Max Open Degree:.....105°  
90° Angle:.....HO or NHO  
Adjustable speed:.....Closing Speed: 90°- 25° Latching Speed: 25°- 0°

- Cement Box Size:275X110X40mm
- Cover Size:290X130mm
- Front and Back Adjust ±5mm

## FS-1400 Floor spring



Capacity:.....150kg  
Door Width:.....1300mm  
Maximum liftable door leaf:.....50mm  
Adjustable Spring Strength:  
Max Open Degree:.....105°  
90° Angle:.....HO or NHO  
Adjustable speed:.....Closing Speed: 90°- 25° Latching Speed: 25°- 0°

- Cement Box Size:283X85X50mm
- Cover Size:308X105mm
- Front and Back Adjust ±3mm



# FS-1000

## Floor spring



- Cement Box Size:250X100X47mm
- Cover Size:268X123mm
- Front and Back Adjust ±5mm

Capacity:..... 60kg/80kg  
Door Width:..... 1000mm  
Maximum Closing Time:..... ≥46s  
Minimum Closing Time:..... ≤3s  
Max Open Degree:..... 105°  
90° Angle:..... HO or NHO  
Adjustable speed :..... Closing Speed: 90°- 25° Latching Speed: 25°- 0°

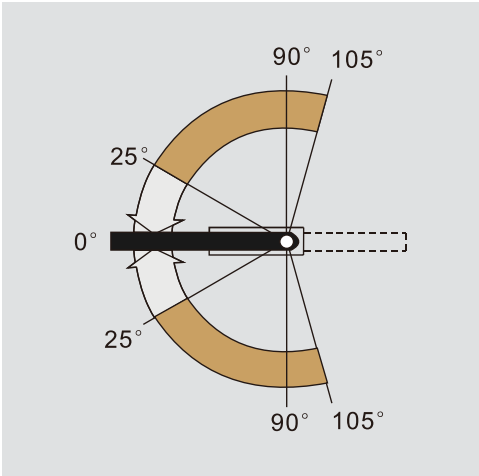
Mounting  
Accessories



Model:FSPF-1001



Model:FSPF-1002



FSA-1010



Package product:

FSA-1020



Package product:

FSA-1030



Package product:

FSA-1040



Package product:  
FS-1500

FSA-1050



Package product:  
FS-1000、FS-1200  
FS-1300、FS-1500

FSA-1060



Package product:  
FS-1200、1400

FSA-1070



Package product:  
FS-1200、1400

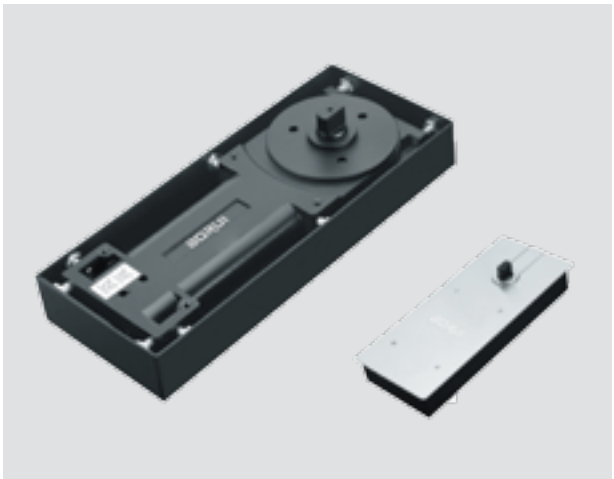
FSA-1080



Package product:

## FS-1500

### Heavy-duty floor spring



Capacity:..... 400kg/300kg/200kg  
Door Width:..... 1800mm/1500mm/1100mm  
Double-cylinder heavy-duty design, stable speed and large load-bearing range.  
Max Open Degree:..... 125°  
Position:..... 90°And120°  
Adjustable speed :..... Closing Speed: 90°- 35° Latching Speed: 30°- 0°

- Cement Box Size:398X160X57mm
- Cover Size:415X175mm
- Front and Back Adjust ±5mm

## FS-1150

### No-digging new floor hinge



Max Open Degree:..... 125°  
Position:..... HO or NHO  
Adjustable speed :..... Closing Speed: 90°- 10° Latching Speed: 10°- 0°

8mm  
-  
13mm  
Glass Thickness

1000 mm  
Max  
Door Width

100-  
150KG  
Capacity

# Glass door clip series

Borui, the expert for door control hardware solutions!

The shell is made of high-quality stainless steel, stamped and formed by automated equipment, and the surface is available in mirror light, sanded, titanium, and other customized colors.

The key parts of the main body are made of high-strength alloy material, which is safe and durable after anti-oxidation treatment.

Equipped with various types of chucks.

Art  
**Focus**  
Vision  
quality

Borui, the expert for door control hardware solutions!

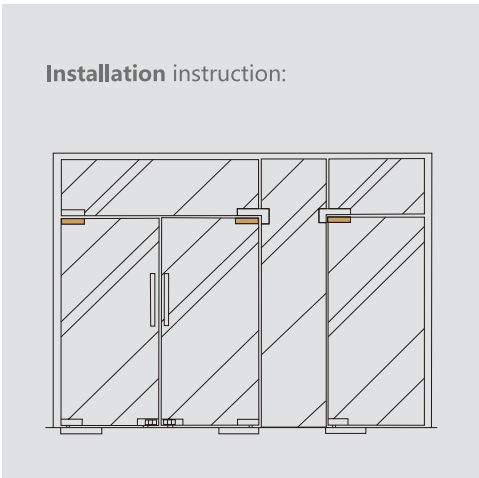
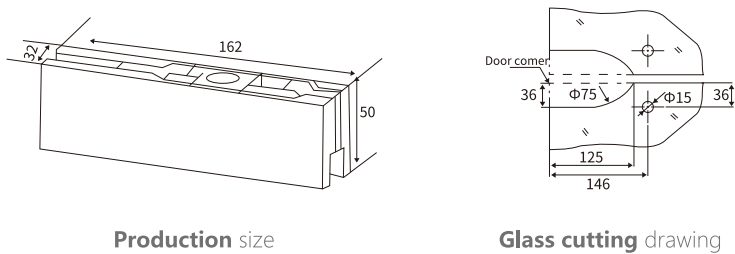




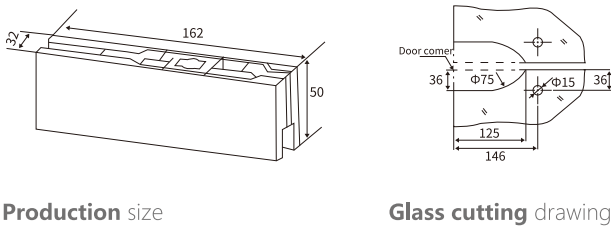
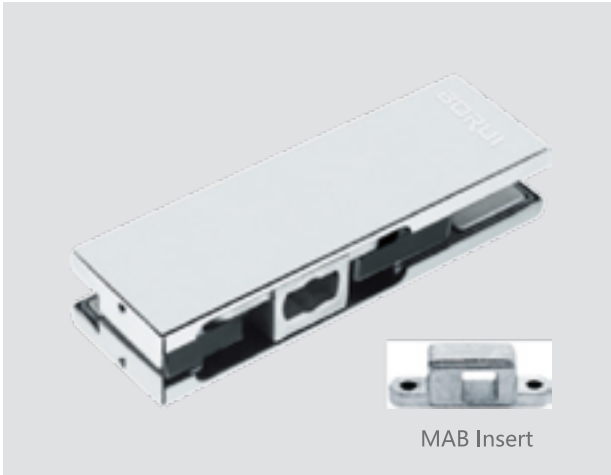
# FS-101 Top patch



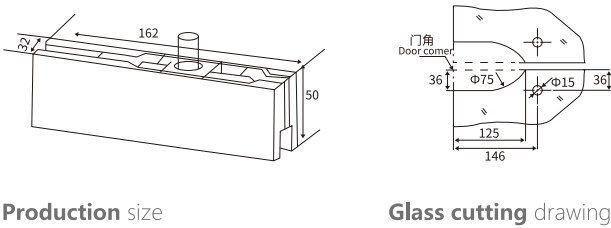
The shell is made of high-quality stainless steel, stamped and formed by automated equipment, and the surface is available in mirror light, sanded, titanium, and other customized colors.



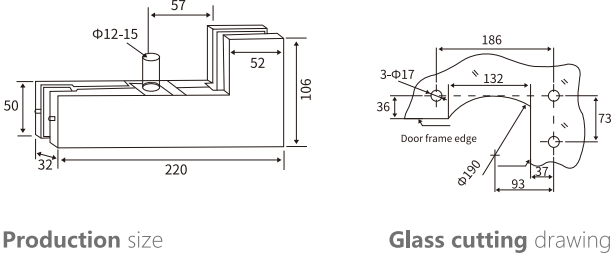
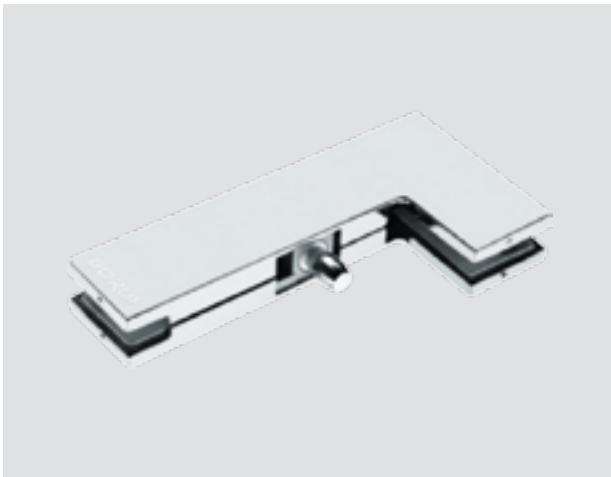
## FS-102 Bottom patch



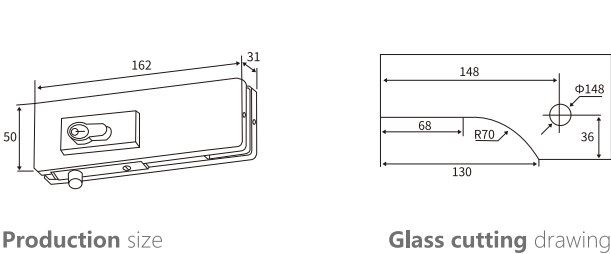
## FS-103 Top corner patch



## FS-104 Lcorner patch



## FS-109 Lock patch

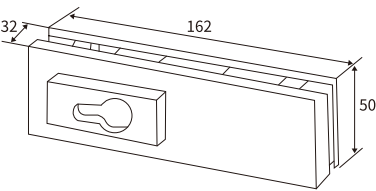


# FS-108 Lock patch

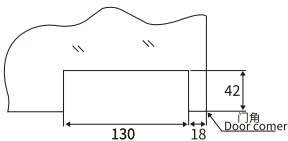


Brass ring  
Bearing ring

The shell is made of high-quality stainless steel, stamped and formed by automated equipment, and the surface is available in mirror light, sanded, titanium, and other customized colors.

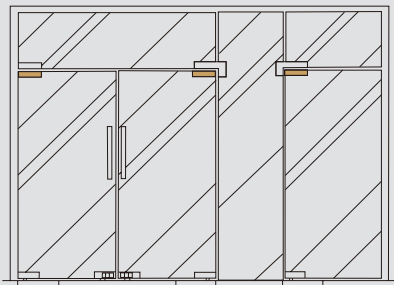


Production size

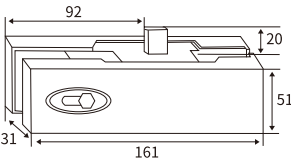


Glass cutting drawing

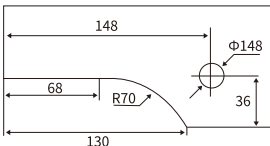
## Installation instruction:



# FS-110 Lock patch

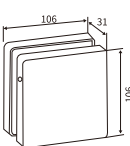


Production size

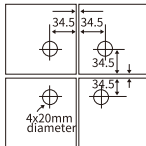


Glass cutting drawing

# FS-111 Connector patch

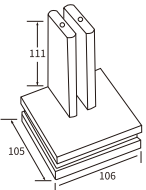


Production size

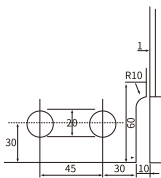


Glass cutting drawing

# FS-112 Connector patch

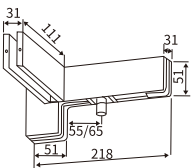


Production size

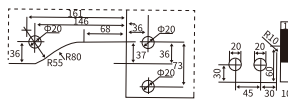


Glass cutting drawing

# FS-113 Connector patch



Production size



Glass cutting drawing



# Door Closers series

High-quality aluminum alloy body, electrostatic painting process, customized color.

Two-stage speed adjustment, the door closing speed adjustment range of different models is 160-15 degrees, and the door locking force is 15-0 degrees.

**Back resistance function:** After the door is opened more than 75 degrees, the door closer can generate a certain damping force to avoid the door opening force being too large, and the speed too fast to hit wall, and its damping force is adjustable.

**Delay function:** When the door opening angle exceeds 75 degrees, the door will delay its closing time to the 75 degree position before returning to normal speed so that people who move slower have enough time to pass through.

Art  
**Focus**  
Vision  
quality

Borui, the expert for door control hardware solutions!



# DC-2000

## Door Closers



Temperature resistance  
smooth Safety  
low noise

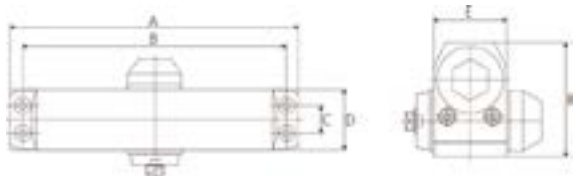


Dimension

model	A	B	C	D	E	F
DC-2000	145.5	132	19	37	34	56

Material:..... Aluminum alloy  
Finish:..... Electrostatic paint  
Series:..... EN2  
Close door speed adjustable:.....135°ses-15°  
Shut lock strenght adjustable:.....15°ses-0°  
Door width:..... 500-800mm  
Max door weight:..... 25-45kg  
Installation dimensions:.....132x19mm

Installation instructions:



# DC-2001

## Door Closer



Material:..... Aluminum alloy  
Finish:..... Electrostatic paint  
Series:..... EN3  
Close door speed adjustable:.....150°ses-15°  
Shut lock strenght adjustable:.....15°ses-0°  
Door width:..... 600-900mm  
Max door weight:..... 45-65kg  
Heavy-Duty:..... 60-70kg  
Installation dimensions:.....162x19mm

Dimension

model	A	B	C	D	E	F
DC-2001	172.5	162	19	40.5	37.5	62.5

# DC-2002

## Door Closer



Material:..... Aluminum alloy  
Finish:..... Electrostatic paint  
Series:..... EN4  
Close door speed adjustable:.....160°ses-15°  
Shut lock strenght adjustable:.....15°ses-0°  
Door width:..... 800-1000mm  
Max door weight:..... 65-85kg  
Heavy-Duty:..... 80-90kg  
Installation dimensions:.....188x19mm

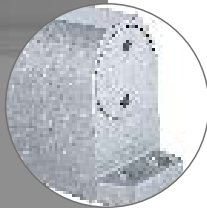
Dimension

model	A	B	C	D	E	F
DC-2002	202	188	19	43	40	68



# DC-2003

## Door Closers



Temperature resistance  
smooth Safety  
low noise

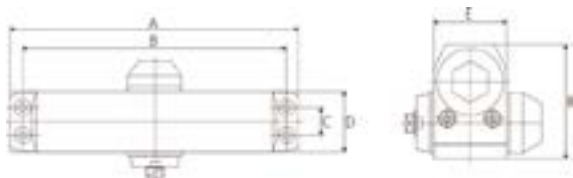


Dimension

model	A	B	C	D	E	F
DC-2003	248	230	19	44.5	43	72.5

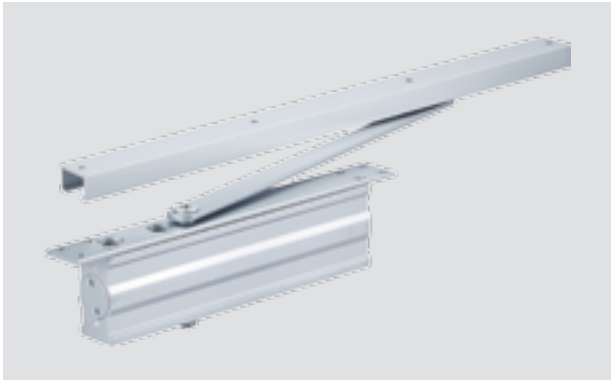
Material:..... Aluminum alloy  
Finish:..... Electrostatic paint  
Series:..... EN6  
Close door speed adjustable:.....170°ses-15°  
Shut lock strenght adjustable:.....15°ses-0°  
Door width:..... 800-1100mm  
Max door weight:.....100-120kg  
Heavy-Duty:.....120-140kg  
Installation dimensions:.....230x19mm

Installation instructions:



# DC-2004

## Door Closer



Material:..... Aluminum alloy  
Finish:..... Electrostatic paint  
Series:..... EN3  
Close door speed adjustable:.....150°ses-15°  
Shut lock strenght adjustable:.....15°ses-0°  
Door width:..... 700-900mm  
Max door weight:..... 45-60kg  
Heavy-Duty:..... 60-70kg  
Installation dimensions:.....262x20mm

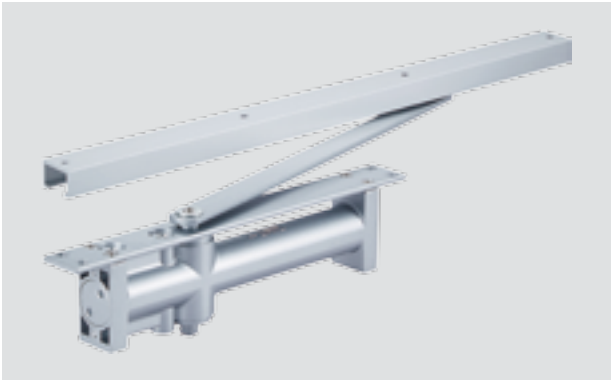
Dimension

model	A	B	C	D	E	F
DC-2004	460	58.5	23	262	19	32



# DC-2005

## Door Closer



Material:..... Aluminum alloy  
Finish:..... Electrostatic paint  
Series:..... EN3  
Close door speed adjustable:.....150°ses-15°  
Shut lock strenght adjustable:.....15°ses-0°  
Door width:..... 700-900mm  
Max door weight:..... 45-60kg  
Heavy-Duty:..... 60-70kg  
Installation dimensions:.....262x20mm

Dimension

model	A	B	C	D	E	F
DC-2005	460	230	262	20	62	32

# Shower hing glass clamp glass folding door series

Borui, the expert for door control hardware solutions!

Made of high-quality 304 stainless steel, copper and zinc alloy and materials can also be customized.

A variety of angle options: 0 degrees, 90 degrees, 135 degrees, 180 degrees.

The surface is available in mirror light, sanding, titanium.

Art  
**Focus**  
Vision  
quality

Borui, the expert for door control hardware solutions!





# SH-3001

## 90° Single side shower hinge



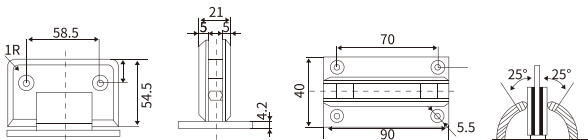
# BATHROOM CLIPS series

Size:8-12mm toughened glass  
Finish: Stain/mirror  
Material: Stainless steel/Brass/Zinc Alloy

# SH-3004

## 180° Shower hinge

Size:8-12mm toughened glass  
Finish: Stain/mirror  
Material: Stainless steel/Brass/Zinc Alloy



# SH-3002

## 90° Double side shower hinge

Size:8-12mm toughened glass  
Finish: Stain/mirror  
Material: Stainless steel/Brass/Zinc Alloy

# SH-3003

## 135° Shower hinge



Size:8-12mm toughened glass  
Finish: Stain/mirror  
Material: Stainless steel/Brass/Zinc Alloy

# SH-3005

## 90° Double clamp shower hinge



Size:8-12mm toughened glass  
Finish: Stain/mirror  
Material: Stainless steel/Brass/Zinc Alloy

# SH-3006

## 180° Shower hinge



Size:8-12mm toughened glass  
Finish: Stain/mirror  
Material: Stainless steel/Brass/Zinc Alloy

**GC-5002**  
90° Double fixed glass clamp



**GLASS CLAMP**  
series

Made of high-quality 304 stainless steel, copper  
and zinc alloy and materials can  
also be customized.

**GC-5007**  
Flat base fixed glass clamp  
Size:6-8mm toughened glass  
Finish: Stain/mirror  
Material: 202#/304#/316#



**GC-5008**  
Arc base fixed glass clamp  
Size:6-8mm toughened glass  
Finish: Stain/mirror  
Material: 202#/304#/316#



**GC-5001**  
90° Single fixed glass clamp



**GC-5003**  
135° Single fixed glass clamp



**GC-5004**  
135° Double fixed glass clamp



**GC-5005**  
180° Single fixed glass clamp



**GC-5006**  
180° Double fixed glass clamp



Made of high-quality 304 stainless steel,  
copper and zinc alloy and materials  
can also be customized.

**GC-5009**  
Flat base fixed glass clamp



Size:6-8mm toughened glass  
Finish: Stain/mirror  
Material: 202#/304#/316#

**GC-5010**  
Arc base fixed glass clamp



Size:6-8mm toughened glass  
Finish: Stain/mirror  
Material: 202#/304#/316#



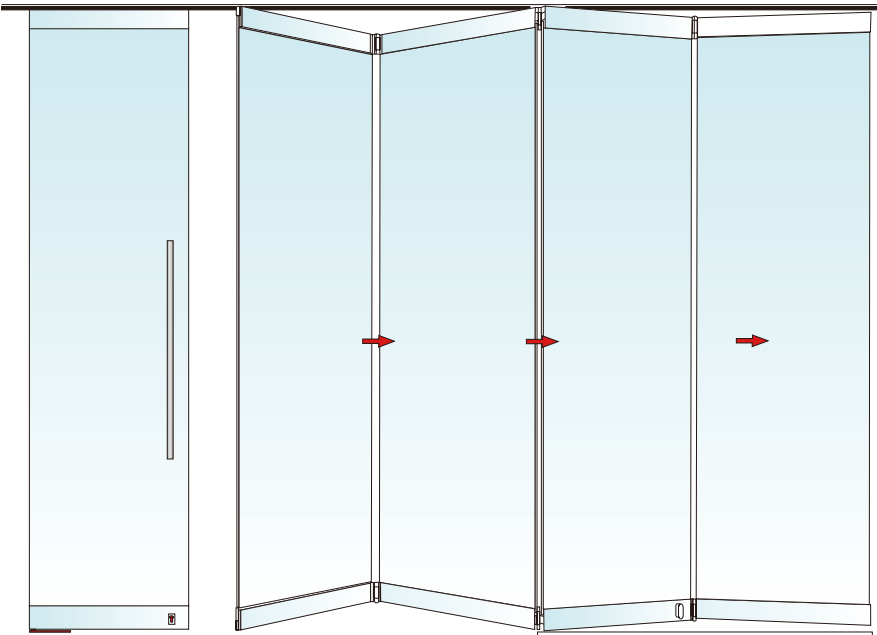
# GF-651

## Glass folding door

# GLASS FOLDING DOOR

## series

- Sliding folding system with top/bottom profiles for glass door under easy installation.
- Glass thickness:10/12/12.7mm
- Top/bottom profiles are available for length of 700mm,800mm,900mm and1000mm, Length for the last pannel can becutat any size asper the real glass width.



A variety of different door leafs  
present different opening methods  
for you!



# Bathroom accessories series

Borui, the expert for door control hardware solutions!

High-quality 304 stainless steel, strict and precise casting and grinding through automated professional equipment. The surface can be mirror light or sanding. Suitable configuration solutions can be provided according to different shower room types.

Art  
**Focus**  
Vision  
quality

Borui, the expert for door control hardware solutions!





# W68K

## Standard appilcation

# Standard appil cation

High-quality 304 stainless steel,  
strict and precise casting and grinding through  
automated professional equipment.

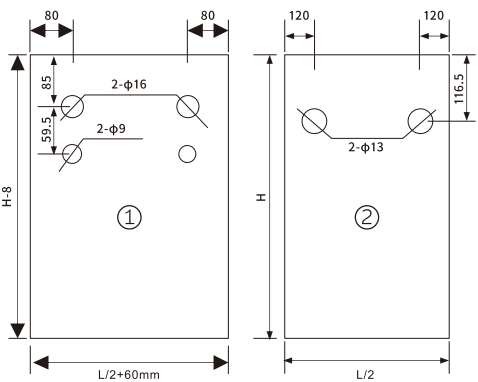
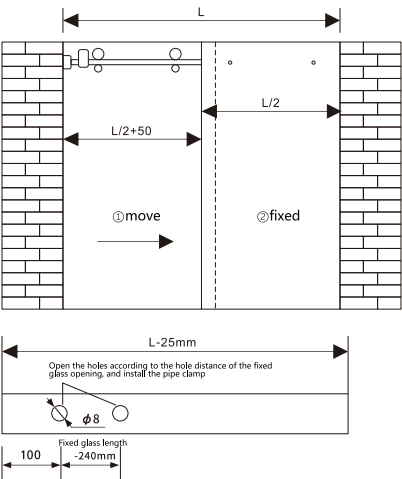


Connectors and hardware accessories  
can be selected separately according  
to actual needs .

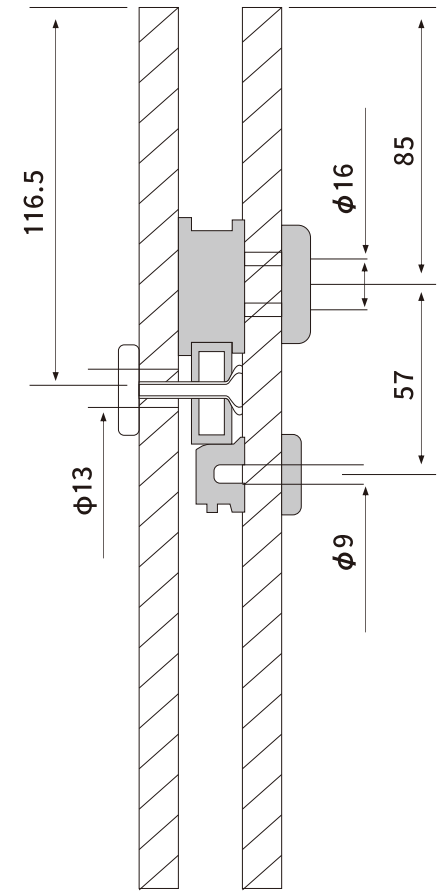


# Installation diagram

30x10 installation of square pipe  
with jumping-proof pillar



30x10 sectional installation of square plpe  
with jumping-proof pillar



# W66K

## Standard appilcation

# Standard appil cation

High-quality 304 stainless steel,  
strict and precise casting and grinding through  
automated professional equipment.

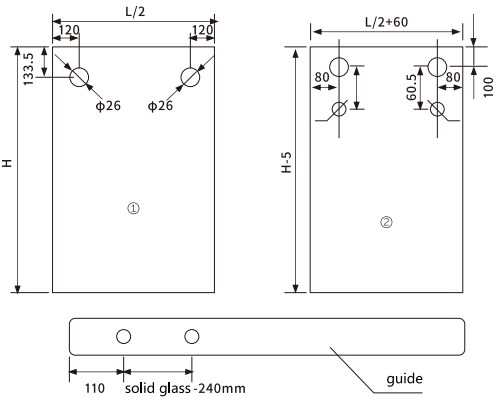
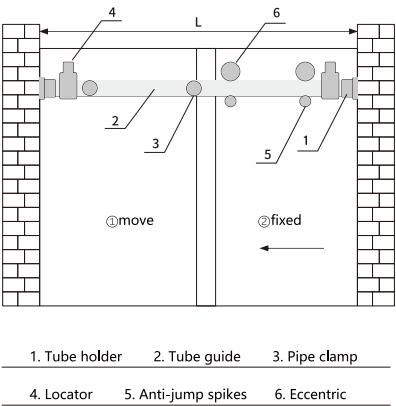


Connectors and hardware accessories  
can be selected separatly according  
to actual needs .

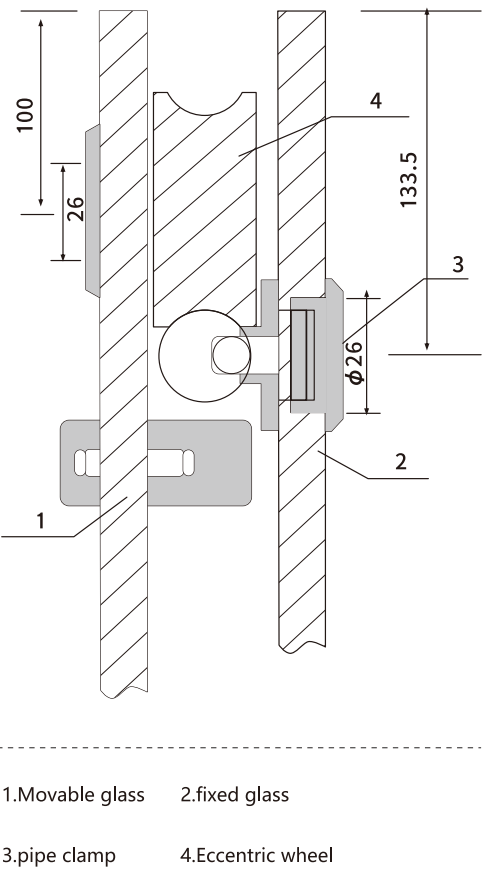


# Installation diagram

Installation of 25 pipe bathroom  
hanging wheel



Sectional installation of 25 pipe  
bathroom hanging wheel





# W69K-1

## Standard appilcation

## Standard appilcation

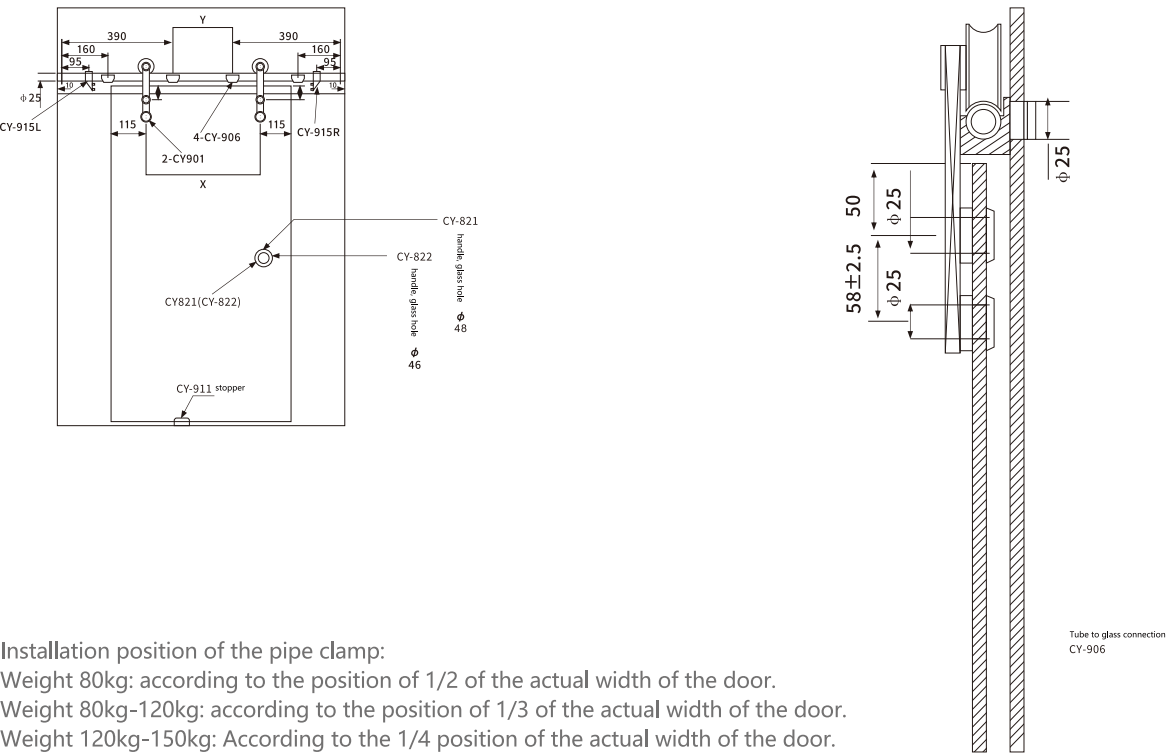
High-quality 304 stainless steel, strict and precise casting and grinding through automated professional equipment.



Connectors and hardware accessories can be selected separately according to actual needs .



## Installation diagram



Installation position of the pipe clamp:  
Weight 80kg: according to the position of 1/2 of the actual width of the door.  
Weight 80kg-120kg: according to the position of 1/3 of the actual width of the door.  
Weight 120kg-150kg: According to the 1/4 position of the actual width of the door.

### Technical data:

Dack yight opening	Entry width	Door width	Tuble length
910-1010mm	800-900mm	880-980mm	2038mm
1010-1110mm	900-1000mm	980-1080mm	2238mm
1110-1210mm	1000-1100mm	1080-1180mm	2438mm
1210-1310mm	1100-1200mm	1180-1280mm	2638mm

# Automatic swing door series

Borui, the expert for door control hardware solutions!

Create a more comfortable life for you!

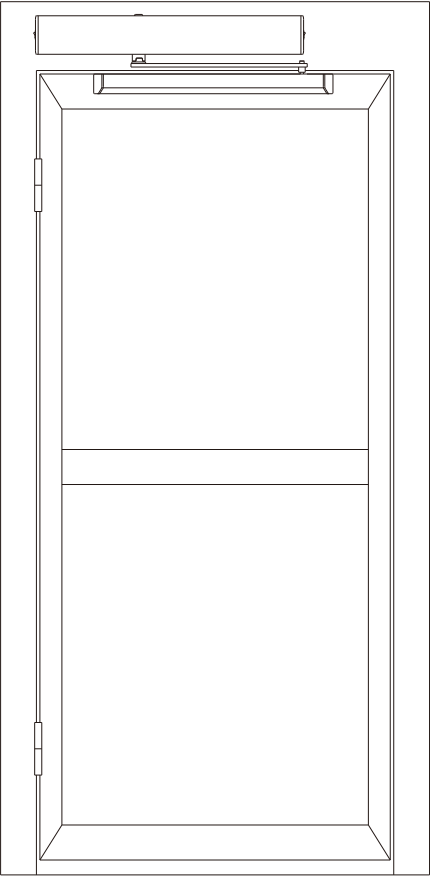
Art  
**Focus**  
Vision  
quality

Borui, the expert for door control hardware solutions!





# Groove tilt and turn



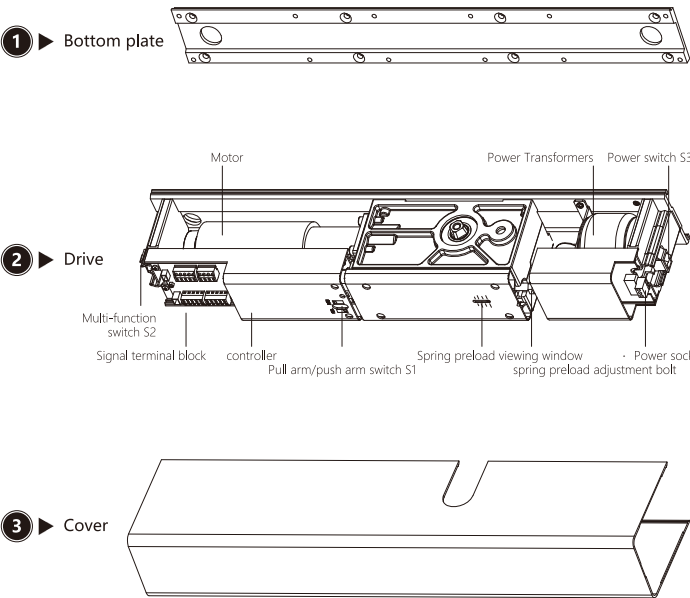
## Precautions

Before installing this mechanical device, be sure to read the manual carefully, and do it after you fully understand it. correct installation work. (If there is a malfunction that is not installed in accordance with this manual, all responsi bility is at your own risk).

Power supply: ..... 220VAC±10%, 50/60Hz  
Power consumption: ..... 100W (max)  
Drive unit: ..... 24v DC motor, spring closed door reset  
Anti-extrusion device: ..... standard  
Opening angle: ..... 80°-100°  
Door opening time (speed): ..... 3-7 seconds adjustable  
Closing time (speed): ..... 3-7 seconds adjustable  
Open hold time: ..... 0.5-30 seconds adjustable  
Drive arm: ..... Pull arm, push arm  
Ambient temperature: ..... -20°C-45°C  
Relative humidity: ..... ≤85%



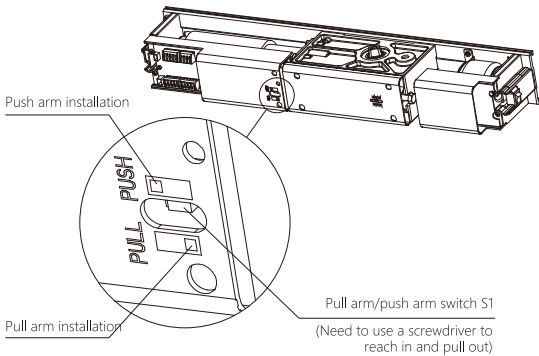
## Parts Description



## Installation form settings

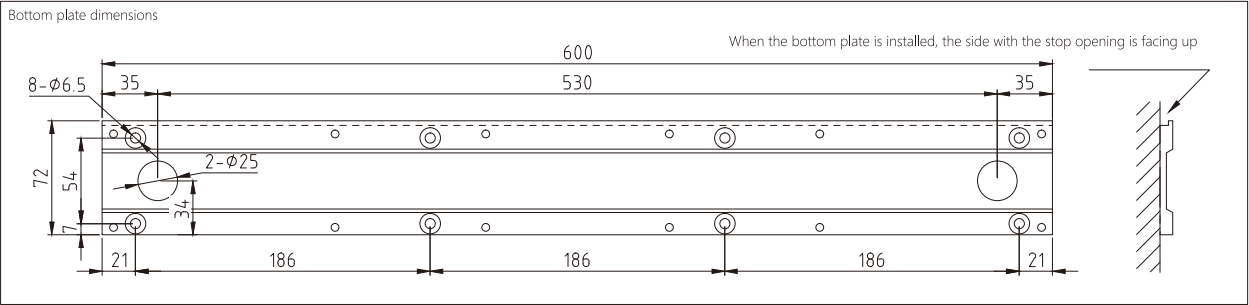
### Notice:

There is a switch S1 on the drive device, which needs to be installed according to the specific installation form (pull armtype installation or push arm type installation) to the corresponding position (see the figure on the right). Assuming If the setting is wrong, the drive will not work properly. The factory default is the pull arm type Install.



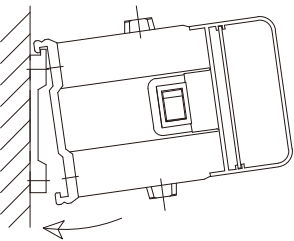
Pull arm installation steps

Bottom plate, guide slot installation



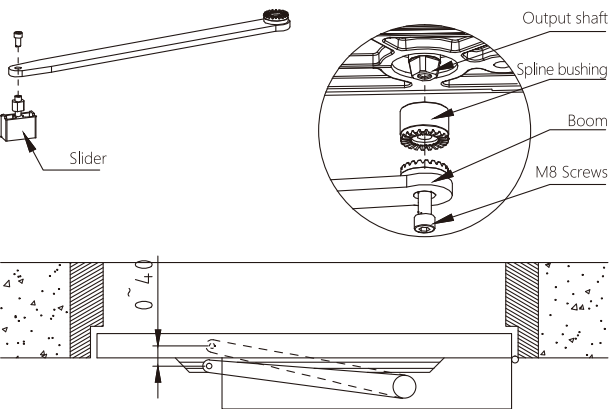
Drive installation

Hang the drive unit on the base plate and fasten it with 8 M 6x12 screws.

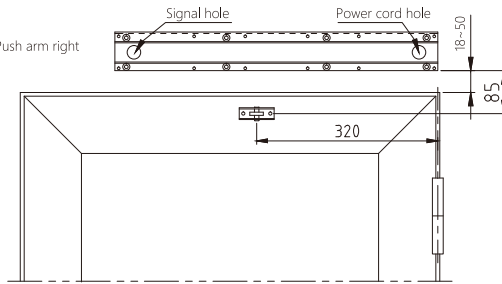
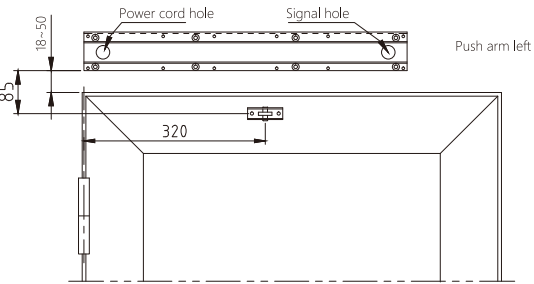


Installation of the pull arm

Temporarily remove the slider on the pull arm; take the right side as an example. Insert the spline sleeve and arm according to the figure. The rod is combined with the output shaft (the end face needs to be completely fitted), check the arm rod (virtualline) is within the range of 0~40 shown in the figure; if it is not within this range.

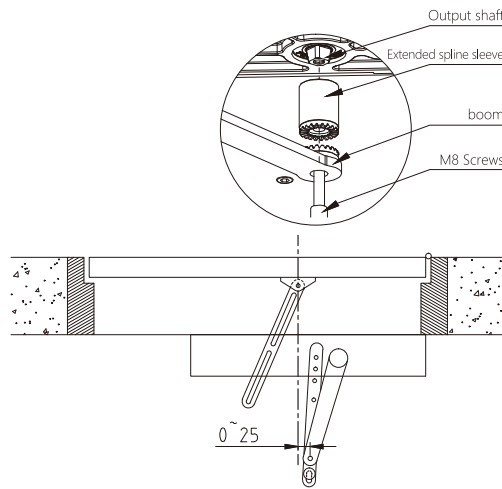


Push arm installation steps



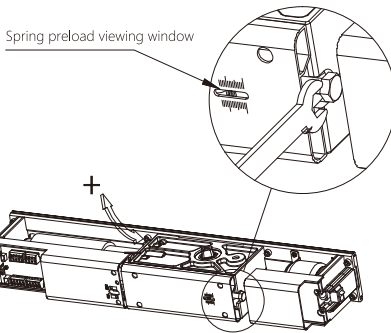
Installation of push arm

Take the right installation as an example, combine the spline sleeve, arm rod and output shaft according to the figure (the end The surface needs to be fully fitted), and check whether the boom is in the range of 0~25 as shown in the figure. like If it is not within this range, turn the spline sleeve 90° relative to the output shaft and try again until meet the requirements. Screw in the M8 screw and tighten the torque 15N.m.



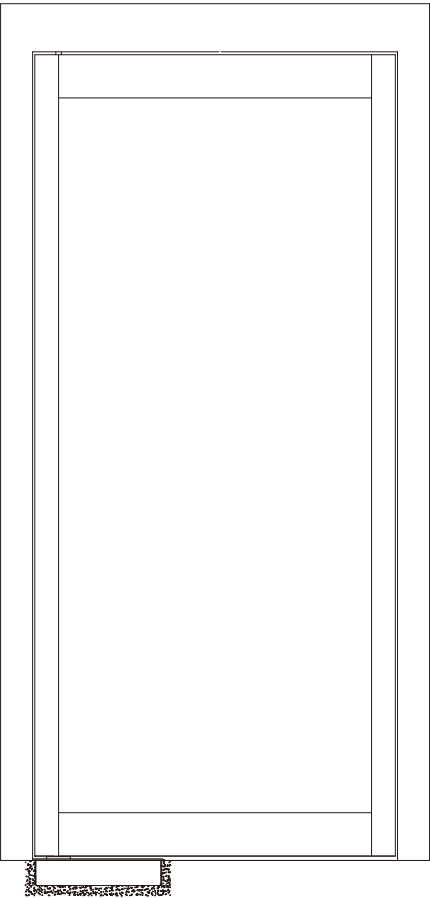
Adjustment of spring preload

Take the right installation as an example, combine the spline sleeve, arm rod and output shaft according to the figure (the end the surface needs to be fully fitted), and check whether the boom is in the range of 0~25 as shown in the figure. like If it is not within this range, turn the spline sleeve 90° relative to the output shaft and try again until meet the requirements. Screw in the M8 screw and tighten the torque 15N.m.





# One-way floor spring



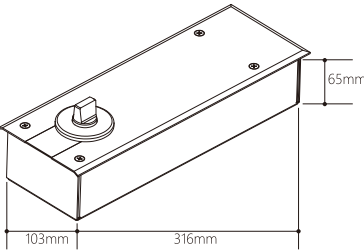
## Precautions

Before installing this mechanical device, be sure to read the manual carefully, and do it after you fully understand it. correct installation work. (If there is a malfunction that is not installed in accordance with this manual, all responsi bility is at your own risk).

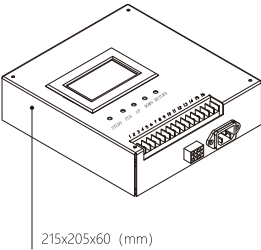
Door weight:	150kg
Door width:	1200mm
Maximum torque:	165kg
Unit weight:	5.5kg
Installation method:	ground buried
Noise:	< 60dB
Electric lock output:	DC12V NO/NC contact
Opening and closing time:	6-12S
Open range:	86°-95°
Power supply:	AC220V±10% 50/60Hz
Rated power:	55W
Standby power:	< 2W
Operating temperature:	-20°C-55°C
Protection class:	IP68
Unit size:	330x116x100 (mm)
Control box size:	215x205x60 (mm)



## Product Description



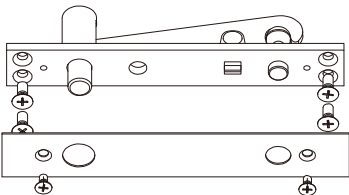
▲ ① Unit



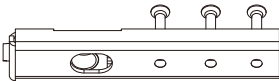
▲ ② Controller

The automatic floor spring realizes the automatic operation of the door body by driving the rotating arm rod from the output shaft of the unit, and can beused both indoors and outdoors.

## Door accessories



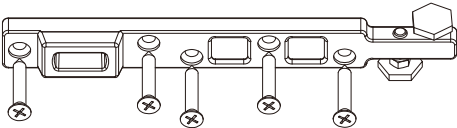
▲ ① Accessories on the stand



▲ ② Accessories under the stand



▲ ③ Wrench



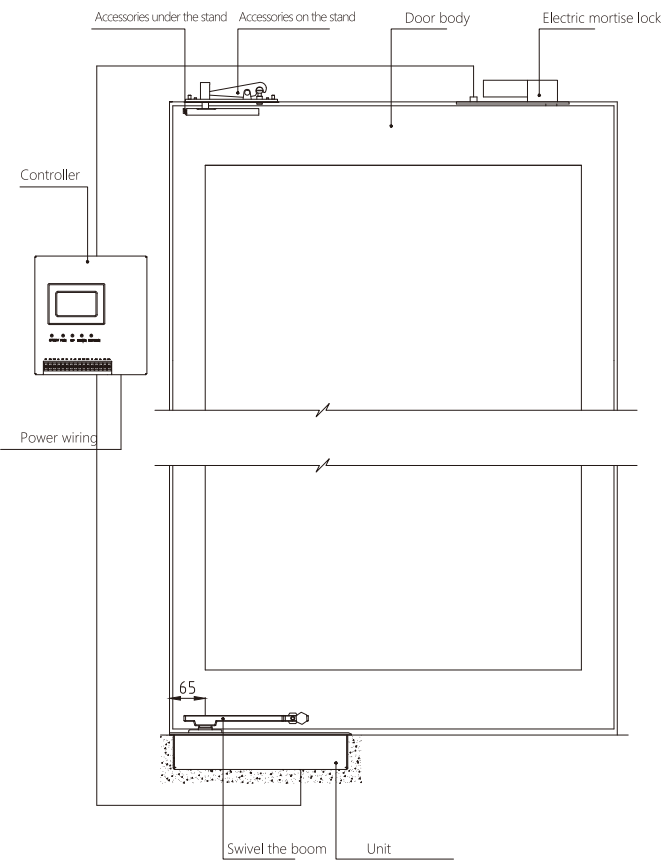
▲ ④ Swivel the boom



▲ ⑤ Remote control

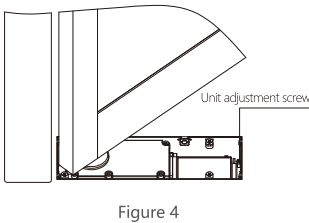
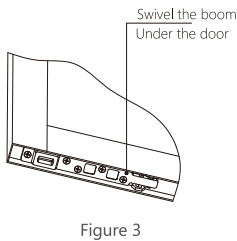
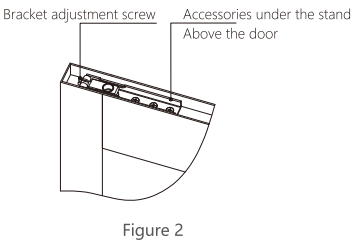
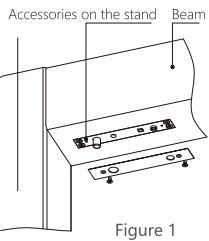
Mechanical installation

Installation diagram of automatic door operator

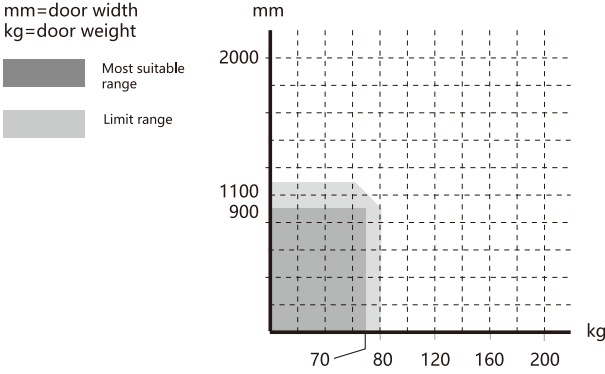
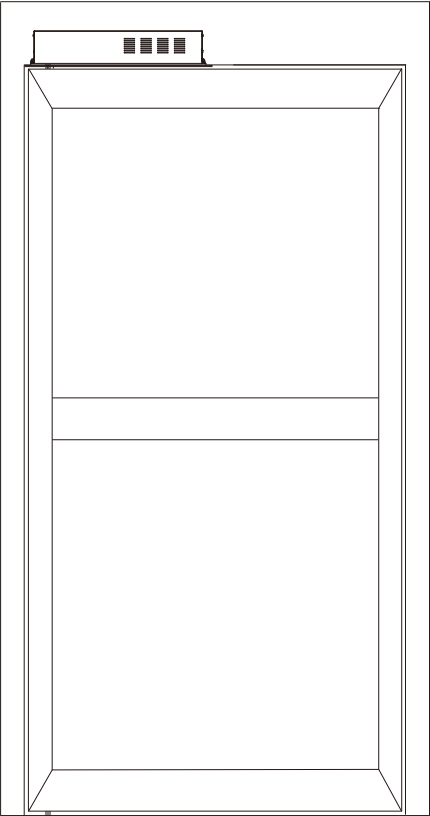


Installation steps

1. Determine the installation position, open a corresponding size slot on the ground according to the size of the unit, and wire as required.
2. Before the unit is fixed, conduct a power-on test on the connection of the unit's output line, controller, and electric mortise lock.
3. Install the upper accessories of the bracket on the beam (Figure 1), and install the lower accessories of the bracket (Figure 2) and the rotating arm (Figure 3) at the corresponding position of the door leaf.
4. Install the door leaf after the unit is positioned, adjust the relative position of the door leaf and the door frame through the adjusting screws of the unit and the bracket, and fix the unit by pouring concrete or brackets (Figure 4).



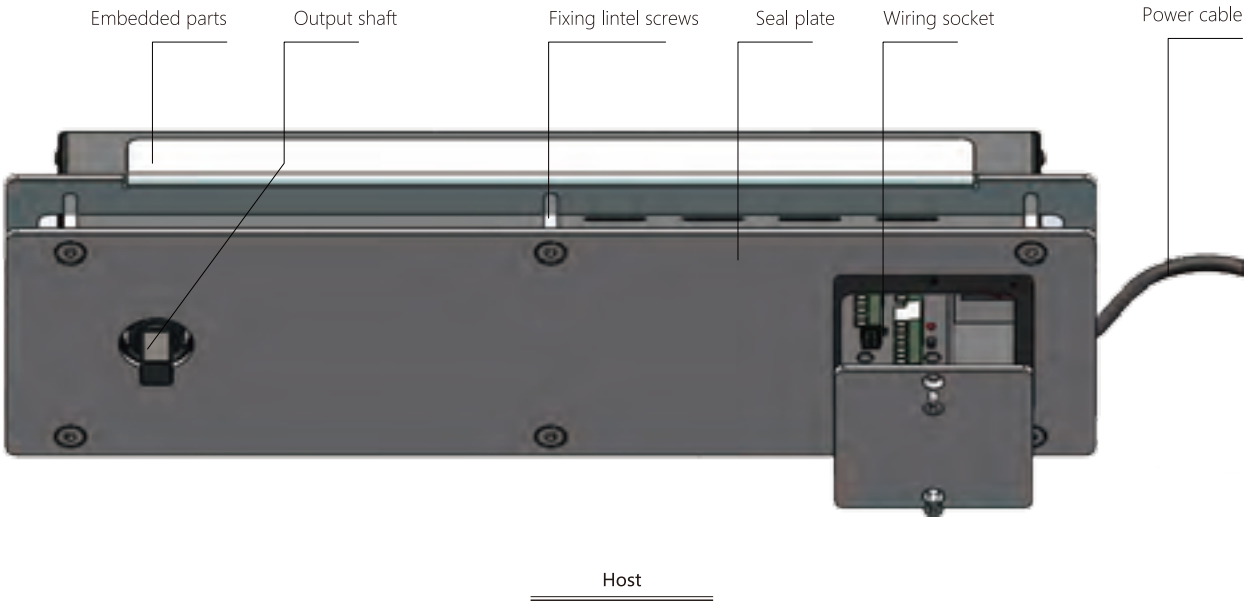
# One-way spring



Power supply:.....220V-240V 50Hz  
Opening time:.....3-7S  
Maximum opening angle:.....105°  
Open door hold time:.....1-30S  
Temperature:.....-20℃—50℃  
Protection level:.....IP12D  
Product weight (unit):.....8.5kg  
Product volume (unit):.....470x135x90mm  
Suitable for door leaf:.....Weight≤70kg Width≤900mm



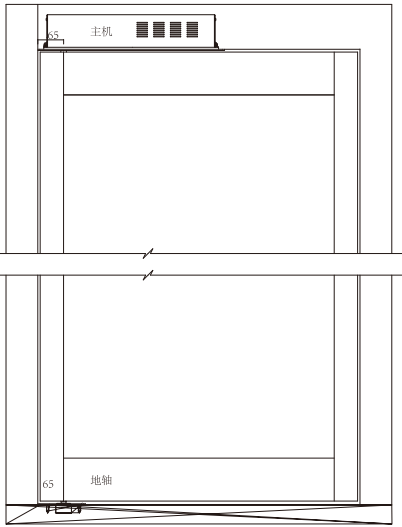
## Host and accessories introduction



## Mechanical installation

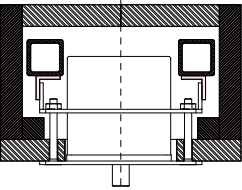
### Host and ground shaft installation example:

Before installing this mechanical device, be sure to read the manual carefully, and do it after you fully understand it.correct installation work. (If there is a malfunction that is not installed in accordance with this manual, all responsi bility is at your own risk).

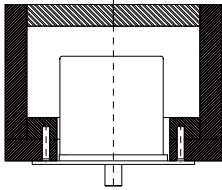




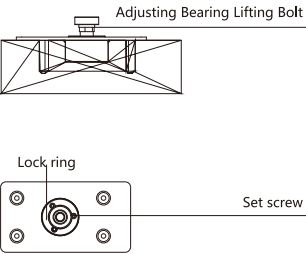
Host and ground shaft installation example



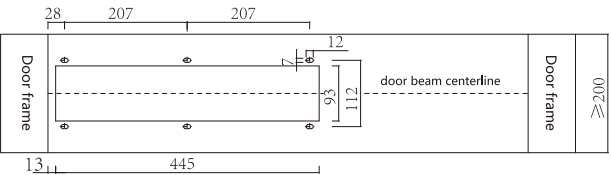
Door beam structure diagram (a)  
Host embedded parts fixing method



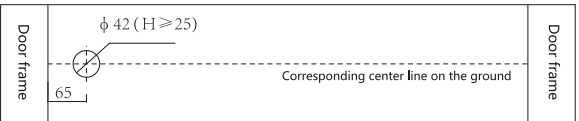
Door beam structure diagram (b)  
Mainframe carpentry board fixing method



Loosen the set screw and locking ring, adjust the upper and lower clearances of the door leaf and door frame by adjusting the bearing lifting bolts, and then The set screw effectively tightens the locking ring.  
Note: The locking ring must be fastened, otherwise there will be malfunctions!



Bottom hole size

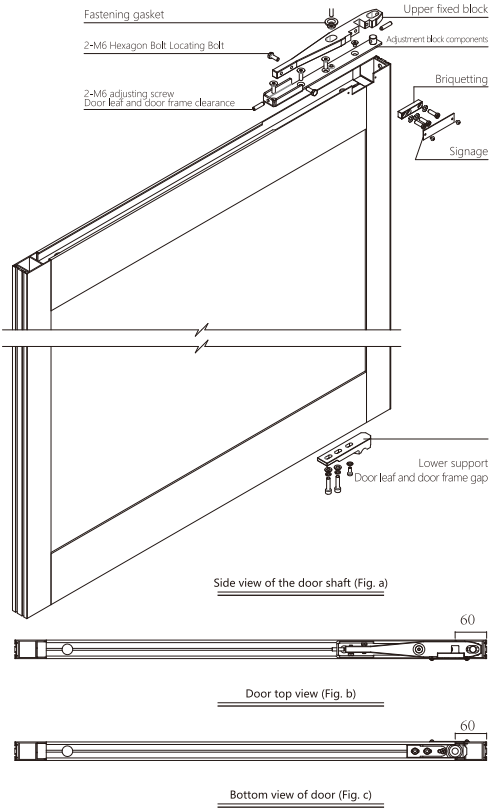


Floor opening size

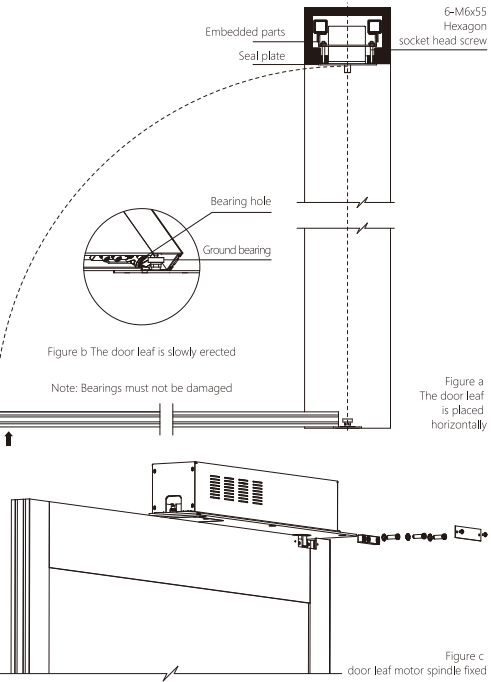


Installation of upper and lower fittings for framed doors

1. When installing a framed concealed door, the cut surface (sign surface) of the door leaf is inside.
2. Use 3-M6 and 1 M5 hexagon socket head countersunk head screw to fix the adjustment block assembly on the door leaf After installing the fixing block and confirming the size initially. Pre-tighten the gasket.
3. Adjust the left and right clearance between the door leaf and the door frame through the 2-M6 adjusting screw, and then adjust the 2-M6 Hexagon bolts are used to ensure that the upper fixing block is effectively positioned in the front and rear, and then the fastening pads are locked.piece.
4. Install the spindle from the cut surface and fix it with 3-M6 socket head cap bolts and external tooth washers Press the block to lock the spindle and install the sign of the door leaf (picture a).
5. Fix the lower support at the bottom of the door according to the size.



Framed door  
overall installation  
example



1. When installing this type of door, move the main unit upwards and use 6 m6\*55 hexagonal countersunk heads screws connect and tighten the sealing plate and the embedded parts, so that the host is fastened on the beam (If it is directly fixed on the wood board, you need to use countersunk head self-tapping screws to fix the host);
  2. Use a spirit level to find the center of the motor spindle and the ground bearing, and then install and fix it after alignment. ground support components;
  3. Place the door leaf with accessories horizontally first, so that the bearing hole of the lower support is in line with the shaft align the bearing and slowly erect the door leaf, turn the door leaf to the proper position and install it into the motor shaft fixed well; such as (figure a), (figure b) and (figure c)
- Note: When the door leaf is disassembled, it should be parallel to the axial direction of the bearing (you can use a lever on the ground Rod) to lift the door leaf to disassemble, this process should pay attention to ensure that the bearing is not damaged;



**BORUI Global Sales**  
Networks

Borui, the expert for door control hardware solutions!